



GC partnership in the Oral Health CRC

The Oral Health CRC seeks to reduce the economic and social burden of oral disease in Australia. World-class scientific and clinical research teams united with Australian and global manufacturers, marketers and distributors make the Oral Health CRC a successful initiative.

Participants in the Oral Health CRC include The University of Melbourne, The University of Queensland and Monash University working in partnership with industry participants Kraft Foods, CSL and GC Corporation.

The Oral Health CRC is supported by the Australian Government's Cooperative Research Centre program. Scientific discoveries through the Oral Health CRC (and its predecessor the CRC for Oral

Health Science) have successfully evolved into new products now commercially available throughout the world.

The Oral Health CRC innovations now manufactured and distributed by GC include Tooth Mousse Plus™, Fuji VII EP and most recently, MI Varnish™, an exceptional fluoride varnish enhanced with RECALDENT™ (CPP-ACP).

The Oral Health CRC has a focus on research, innovation and commercialisation of new dental products. This strategy results in new scientific discoveries that are translated into practical tools and products designed to help dental professionals address the many challenges of oral disease that present in our communities on a daily basis.

Image: Laureate Professor Eric C Reynolds CEO & Director of Research, Oral Health CRC, and GC Corporation Chairman Mr. Makoto Nakao



Introducing EQUIA Forte™ – The new generation of high strength glass ionomer restorative

The EQUIA Forte™ system consists of EQUIA Forte™ Fil and EQUIA Forte™ Coat.

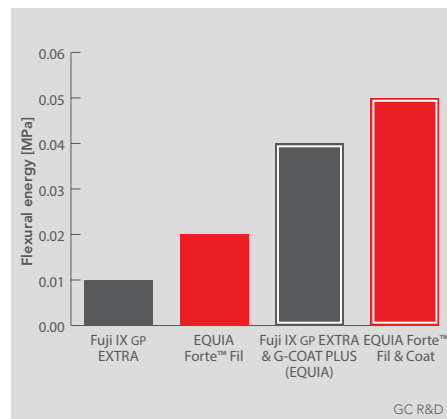
EQUIA Forte™ Fil is a high strength, fast setting, aesthetic glass ionomer restorative which features a significant increase in fracture toughness (flexural energy) and flexural strength.



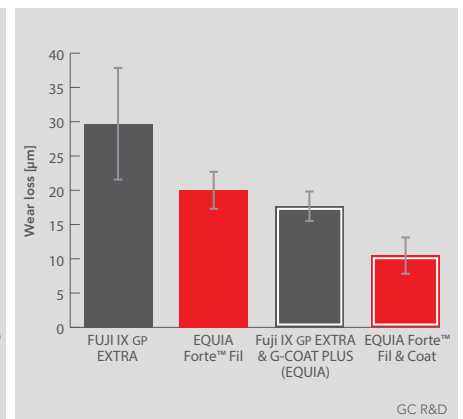
EQUIA Forte™ Coat completes the EQUIA Forte™ restoration providing a smooth laminated surface with remarkable strength and impressive wear resistance. EQUIA Forte™ Coat is designed for optimum wetting, strong adhesion and has excellent colour stability and stain resistance.



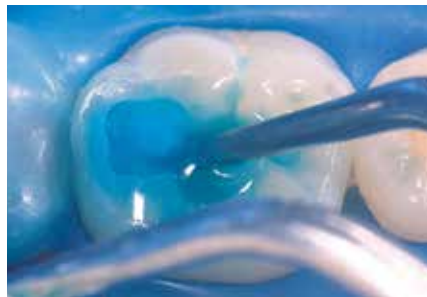
Higher fracture toughness



Superior wear resistance



EQUIA Forte™ Technique – Dr E. Stephen Vouliotis



CAVITY CONDITIONER applied for 10sec to remove surface debris.



EQUIA Forte™ Fil has up to 60sec working time and is placed in one increment.



EQUIA Forte™ Coat was applied and light-cured 20sec to complete the EQUIA restoration.



1 week after placement.

MI Varnish™, the first fluoride varnish with RECALDENT™ (CPP-ACP)

MI Varnish™ is a 5% NaF varnish enhanced with 2% RECALDENT™(CPP-ACP) to give an exceptional fluoride varnish that releases more bio-available fluoride, calcium and phosphate.

Perfect brush, optimum flow

Packaged with the “perfect application brush”, MI Varnish™ gives clinicians the smoothest and easiest fluoride varnish application experience.

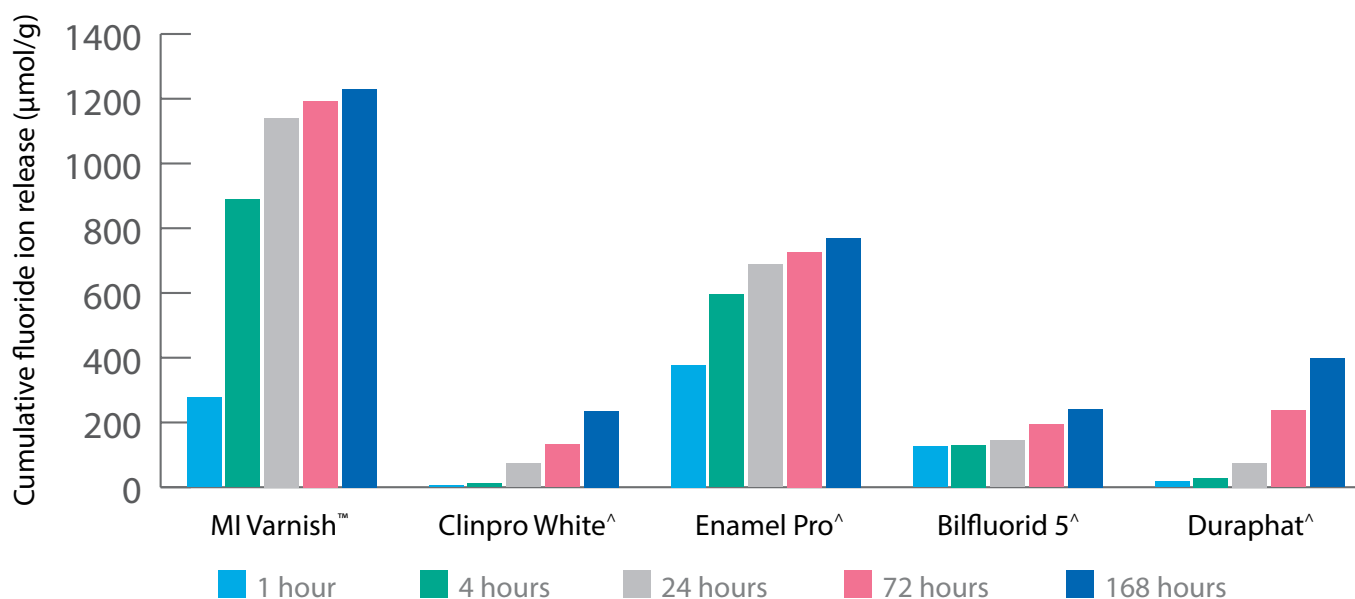
Smooth, translucent and tasty

Once applied, MI Varnish™ has a beautiful smooth consistency and a neutral shade with natural translucency. The great tasting strawberry and mint flavours mean MI Varnish™ will be your patient’s first preference as well.



The best way to deliver fluoride is in combination with RECALDENT™ (CPP-ACP)

MI Varnish™ provides a significant source of fluoride ions*



* Cochrane NJ, Shen P, Yuan Y, Reynolds EC. Ion release from calcium and fluoride containing dental varnishes. Aust Dent J. 2014 Mar;59(1):100-105. ^ Not trademarks of GC Corporation MI Varnish contains RECALDENT™ (CPP-ACP), a unique ingredient developed at The School of Dental Science, The University of Melbourne, Victoria, Australia. RECALDENT and RECALDENT Device are trademarks used under licence. MI Varnish should not be used by people with milk protein allergies. If any allergic reaction occurs, this may indicate sensitivity to the benzoate preservatives, or to some other component of the product. In this event, discontinue use of the product and contact your physician.

G-ænial Anterior

G-ænial is a universal composite that acknowledges that anterior and posterior teeth are different.

G-ænial Anterior features enhanced light scattering abilities to bring a more natural vitality and exceptional shade matching for superior anterior aesthetics. Designed with handling that gives freedom to effortlessly shape, flow and sculpt.



G-ænial Anterior

"No-preparation direct composite veneers. Shades JE, XBW, IE." Dr Clarence Tam



G-ænial Posterior

A low shrinkage stress composite with a consistency that is firmer and more packable.

G-ænial Posterior features shades with a deeper concentration of colour to better match the optical properties of posterior teeth.



G-ænial Posterior

"Nothing fancy, just a simple G-aenial Posterior Shade A2." Dr Graeme Milicich

